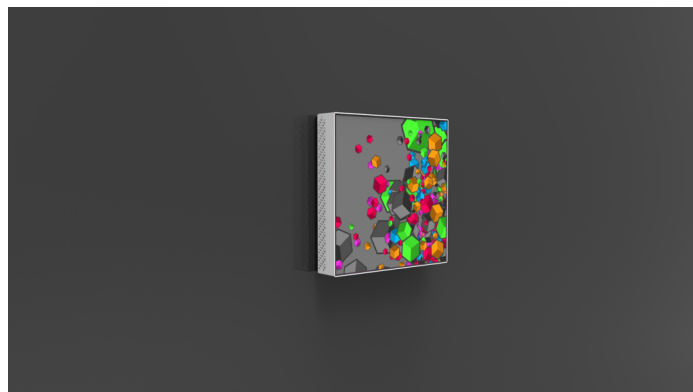




Planar AD22

Architectural Video Wall

The Planar® Salvador™ AD22 is a truly square 22" display tile with a trend-setting 1:1 aspect ratio. The Planar Salvador AD22 tile can be mounted in any position relative to other display tiles, and individually at almost any angle.



SPECIFICATION	DETAIL
Product Name	AD22-Salvador
Planar Part Number	997-6817-00
Active Area	15.25" x 15.25" (387.4 mm x 387.4 mm)
Diagonal	21.6" (549mm)
Tiled Bezel Width	10.80mm (.43") image-to-image using recommended spacer brackets
Orientation	Any
Aspect Ratio	1:1
Brightness (Typical)	450 nits
Backlight	LED
Contrast Ratio (typ)	4000:1
Response Time (typ)	8 ms
Frame Rate	60Hz
Viewing Angle (typ)	178°
Native Resolution	960 x 960
Colors	16.7 million
Color Gamut	72% NTSC
Surface Treatment	Anti-glare

Data Inputs	DisplayPort
Line Voltage	100-240V; 50/60Hz
Power Supply Module Line Current	25 amp
Power Consumption (typ)	76.6W
External Connections	DisplayPort, USB, Power
Operating Temperature	0° to +40° C
Storage and Transport Temperature	-20° to +60°C (-4° to 140°F)
Operating humidity range	20-80% RH non-condensing
Dimensions including Wall Mount	15.55" x 15.55" x 3.6" (395 mm x 395 mm x 93 mm)
Weight, including mount	16.3 lbs (7.39 kg)
Recommended Usage	Up to 24/7 mission critical operation
Options / Features	Edge trim kit, cables, Mosaic Consulting Services, Installation Services, Extended Warranty to a total of 5 years.
Warranty	3 years Advance Exchange
UPC	8 10689 06592 0

For more information, please visit www.planar.com

Specifications are subject to change without notice.

Specification Report Date: 5/9/2024

© Copyright 2024 Planar Systems, Inc. All rights reserved